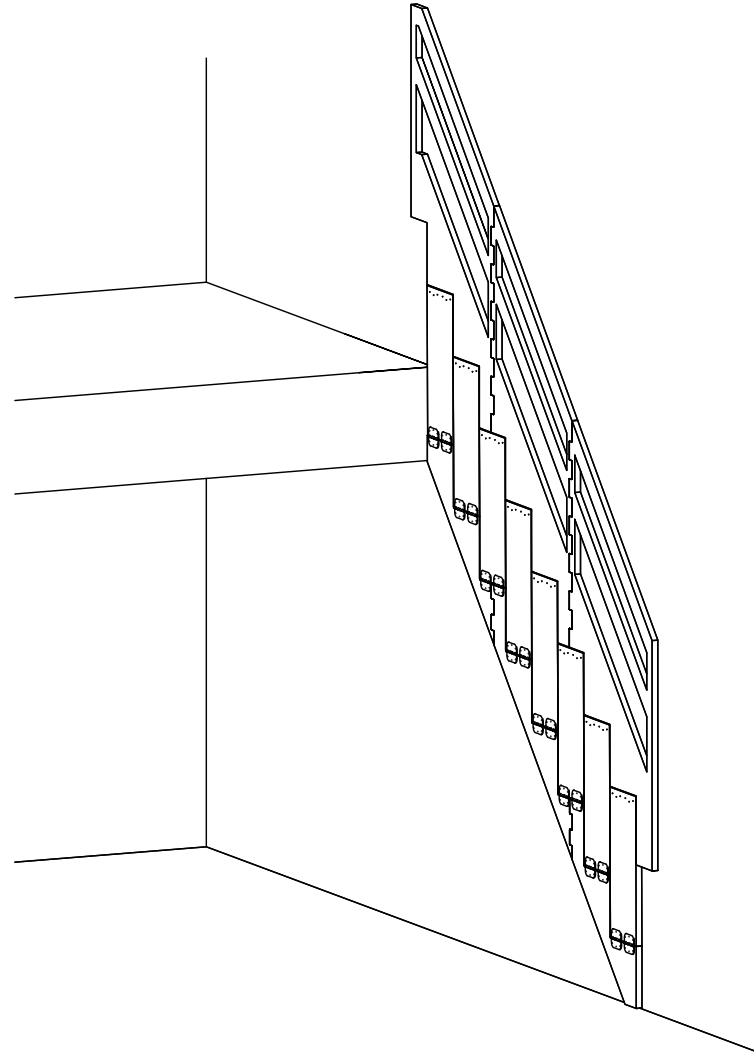
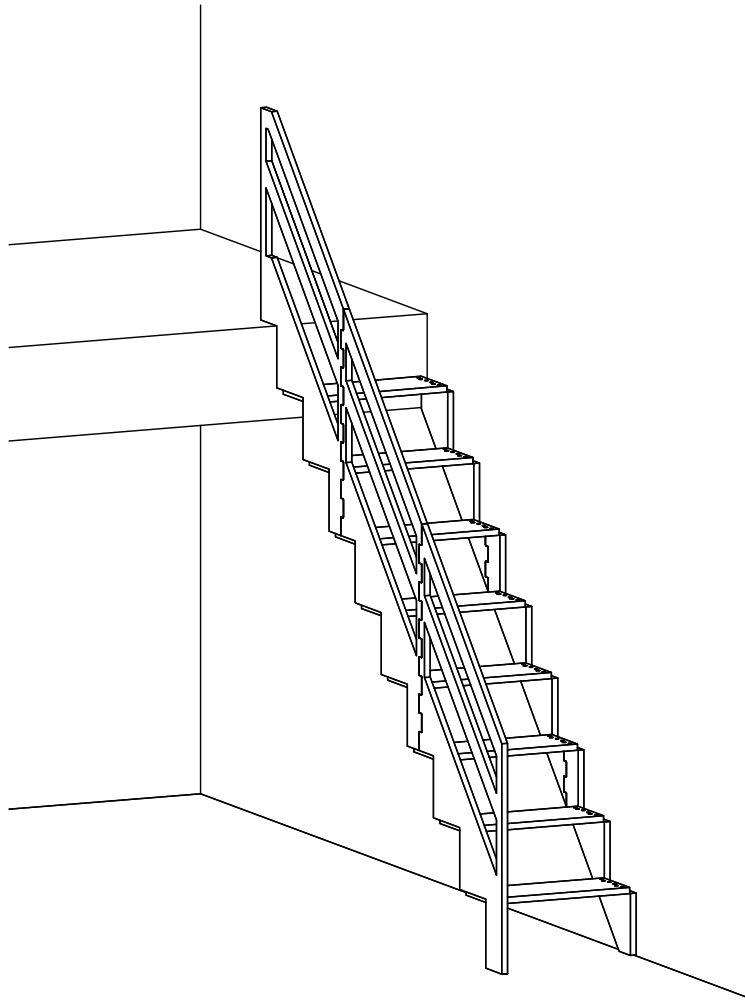
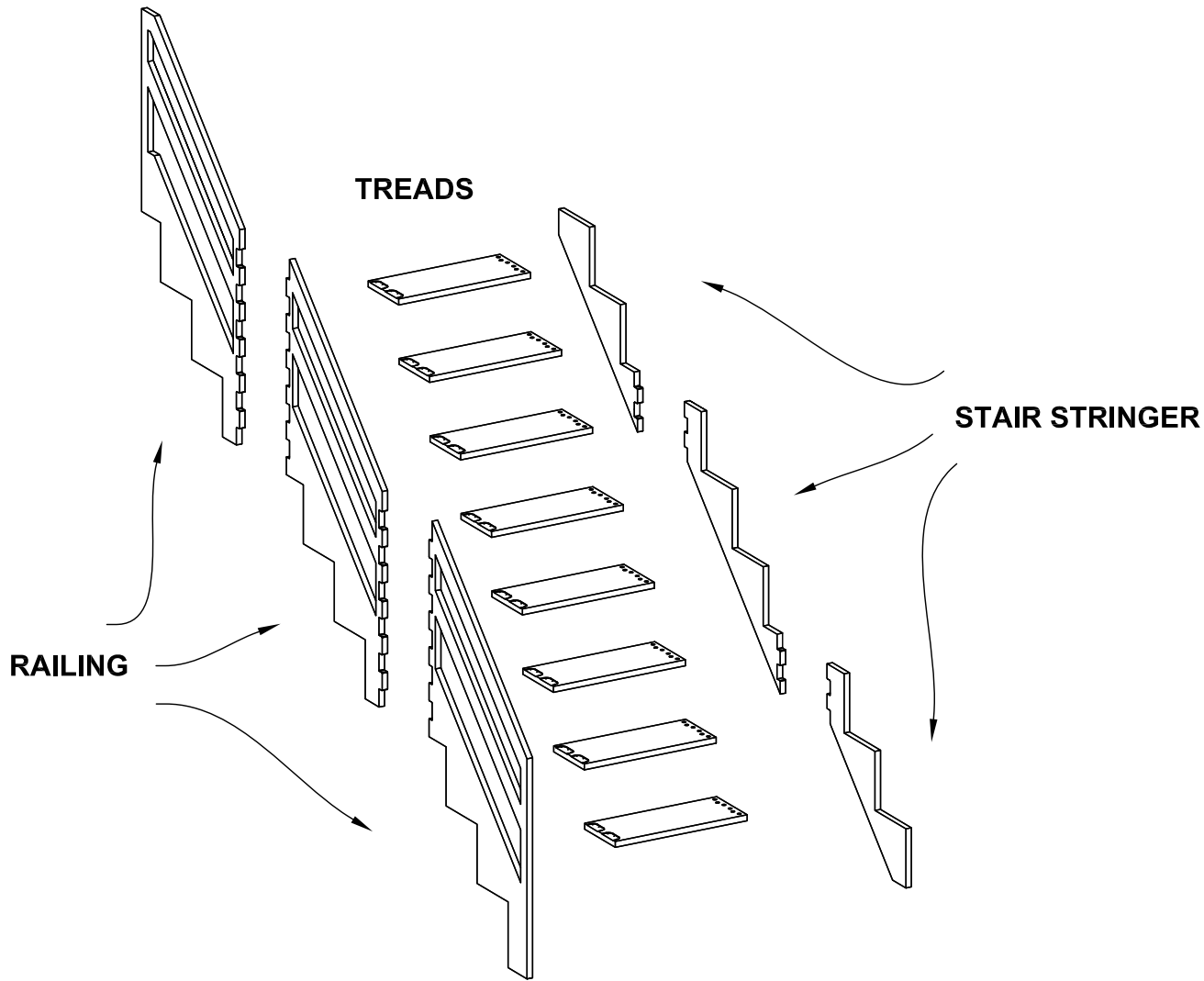


Folding Staircase Assembly Instructions





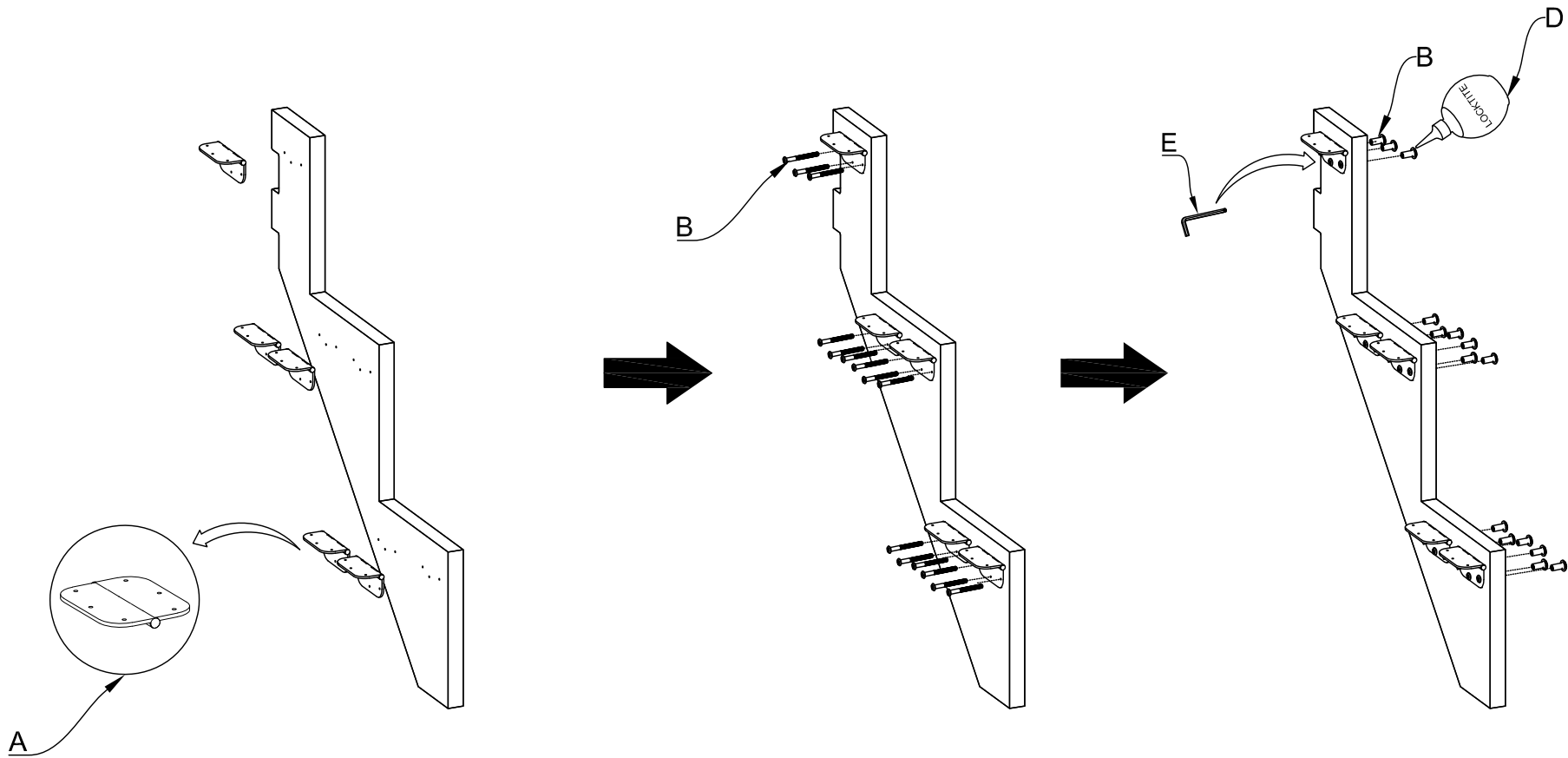
The number of sections of railing and stair stringer can vary depending on the height of the stairs. For instance, a shorter staircase might have only the top and lower sections without a middle one. Conversely, a taller staircase could have two middle sections.

PARTS		
(A)	(B)	(C)
(D)	(E)	(F)
(G)	(H)	

TOOLS REQUIRED (NOT PROVIDED)		
(I)	(J)	(K)
(I)	(I)	

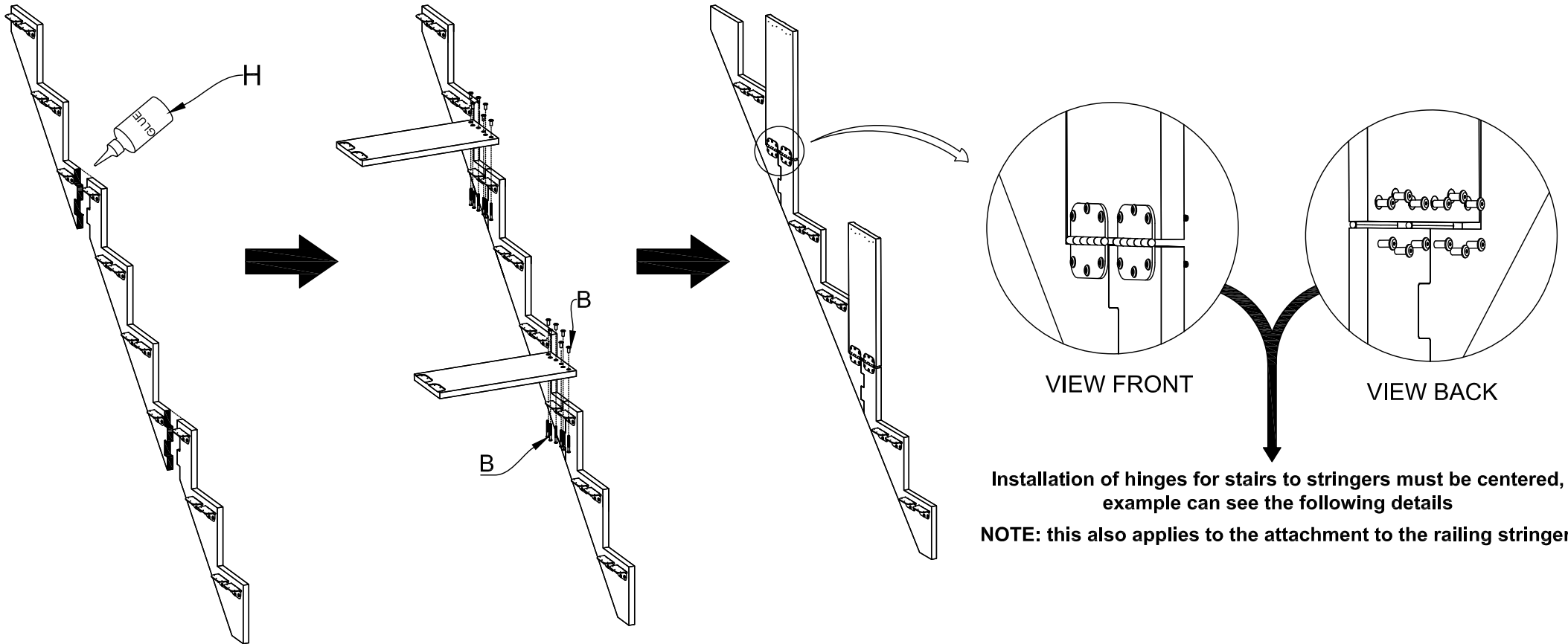
STEP 01 Attach Hinges to the Wall Stair Stringer

1. Align the three hinge holes with the pre-drilled holes in the stringer.
 - Orient wall stair stringer: The larger holes should face toward wall so the hardware will sit counter sunk. This allows the stringer to sit flush with the wall.
 - Orient the hinges correctly: Beveled holes facing out from wood, with hinge pins facing toward top of the stair.
2. Put a drop of locktite on the threads at the tip of the bolt.
3. Insert bolts through the hinge holes and secure them with the barrel nut on the backside of the stringer
 - Use allen keys to tighten.
4. Repeat for all three sections of the stair stringer.



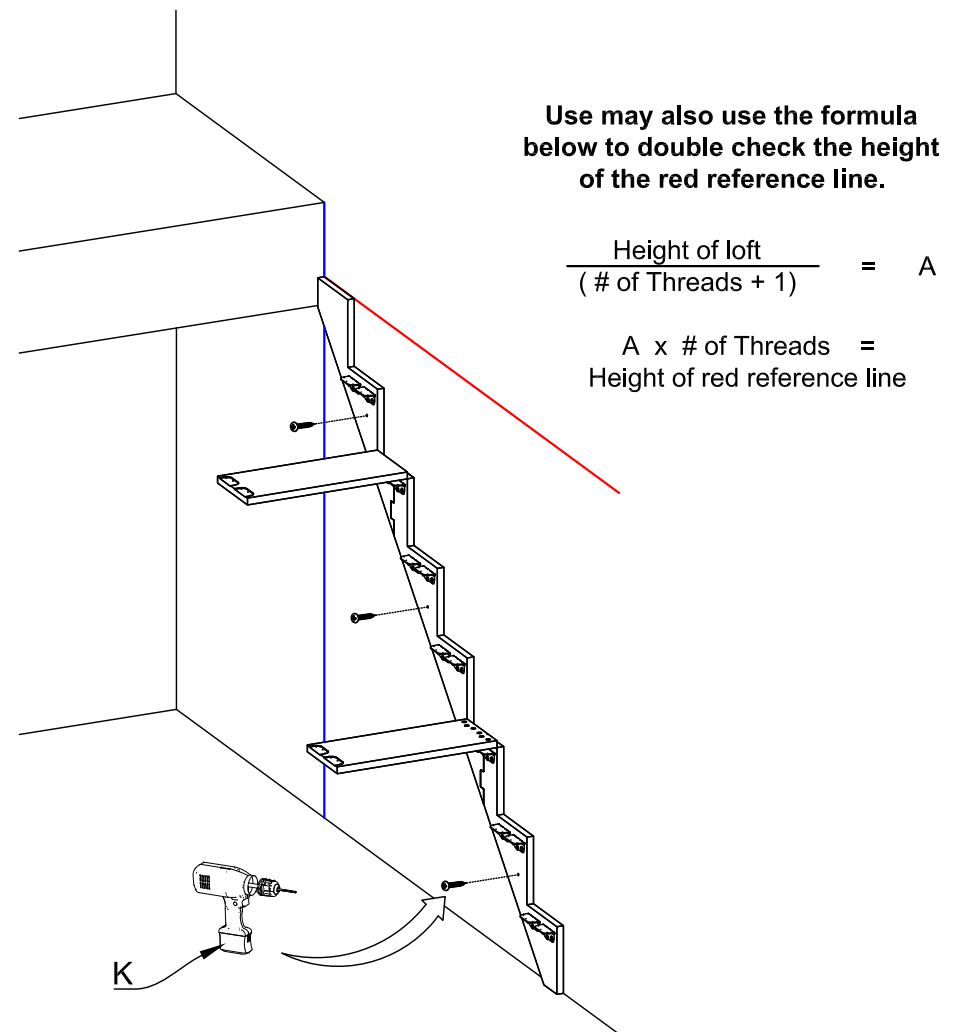
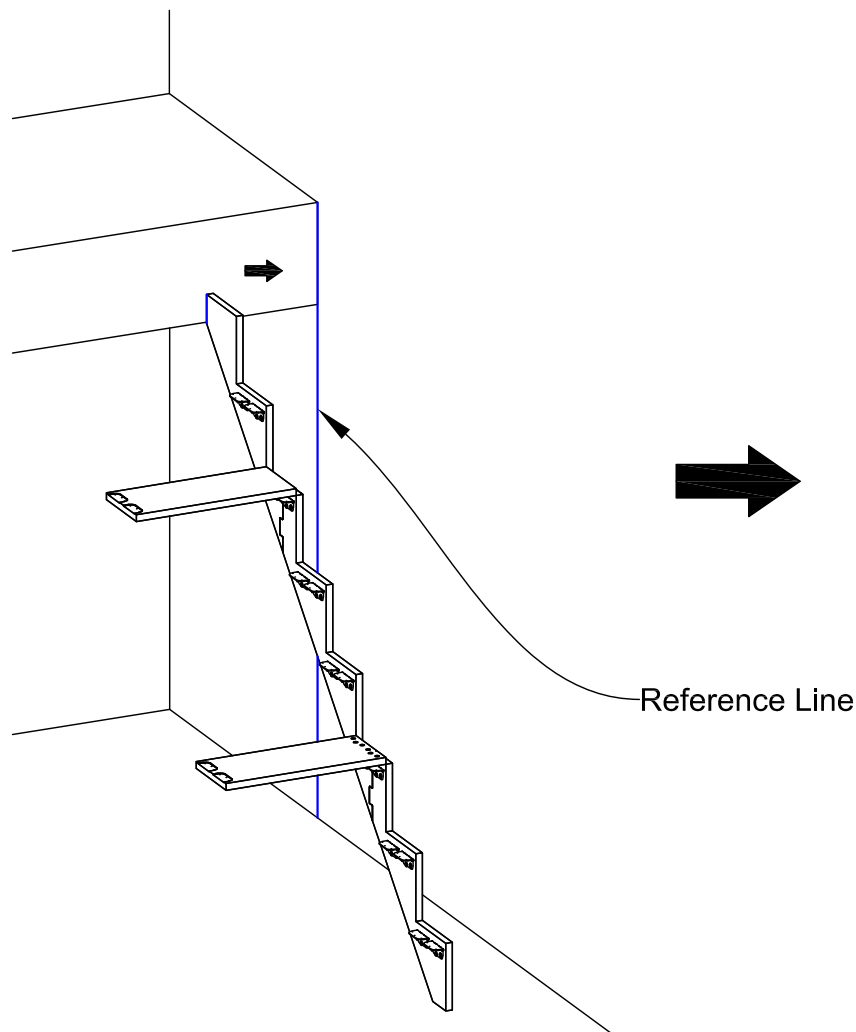
STEP 02 Assemble the Wall Stair Stringer

1. Connect the three sections of the stair stringer via the puzzle piece joint using a thin layer of glue.
2. Secure them further by attaching the treads to the hinges on either side of the puzzle piece joint. This will keep the stair stringer aligned and provide support for handling. Remember to apply a drop of locktite to first couple of threads on the bolt.
 - Orient treads so the inlaid hinge is on the top of the tread toward the railing side.



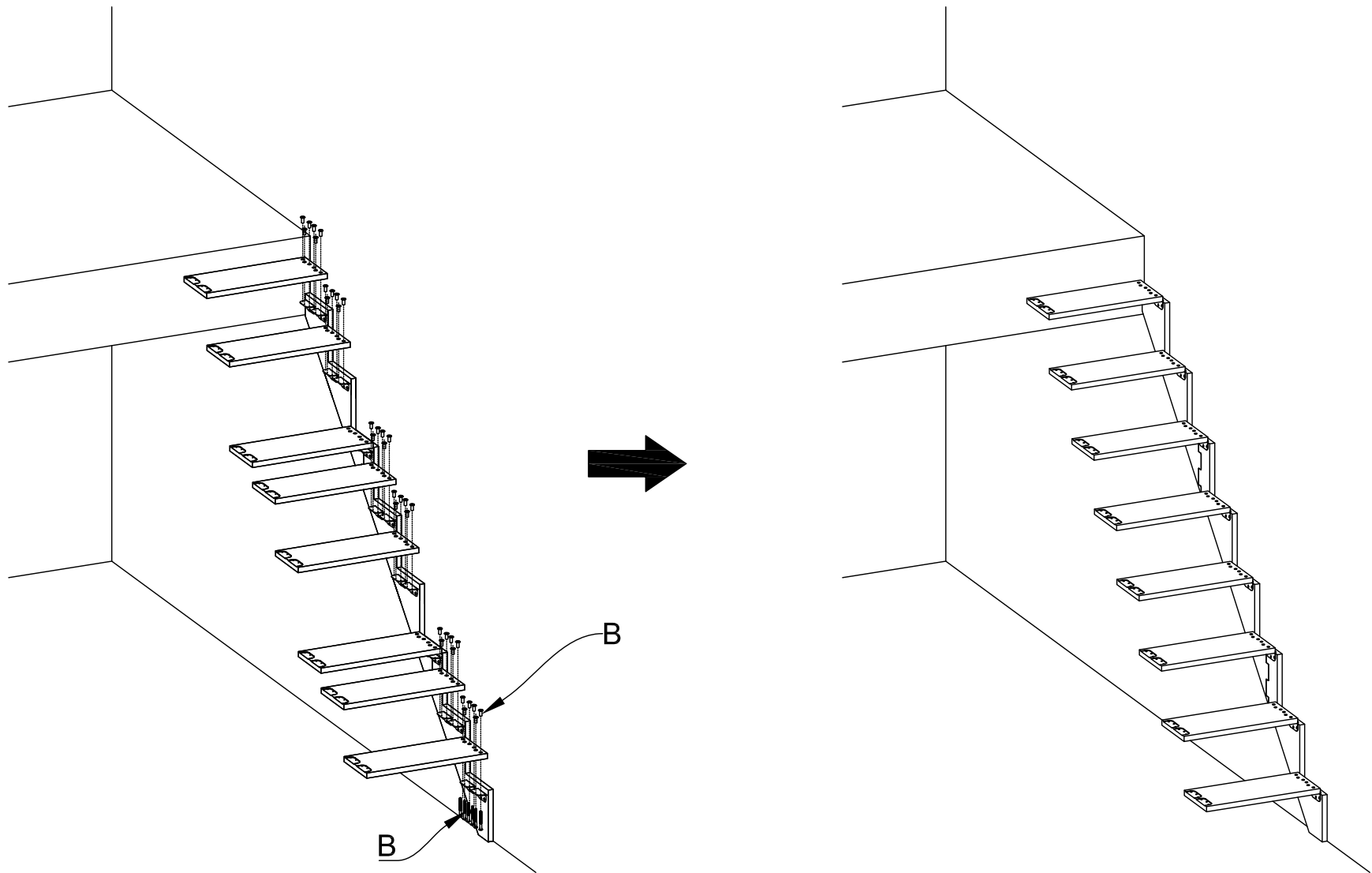
STEP 03 Mount the Stair Stringer to the Wall

1. To align the stair stringer on the wall, draw a line straight down from the edge of the loft as a reference point.
2. Position the stair stringer:
 - Align the vertical edge of the top stair stringer with the corresponding reference line (shown in blue).
 - While holding the stair stringer to the wall, use a level to ensure the horizontal aspects of the stringer are level and the bottom is flush with the floor.
 - The stair stringer is in the correct position if the top edge indicated in blue is aligned along the reference line AND the bottom stair stringer is flat on the floor.
3. Locate wall studs using a stud finder and secure the stair stringer to studs using appropriate wall-mounting hardware (not included).



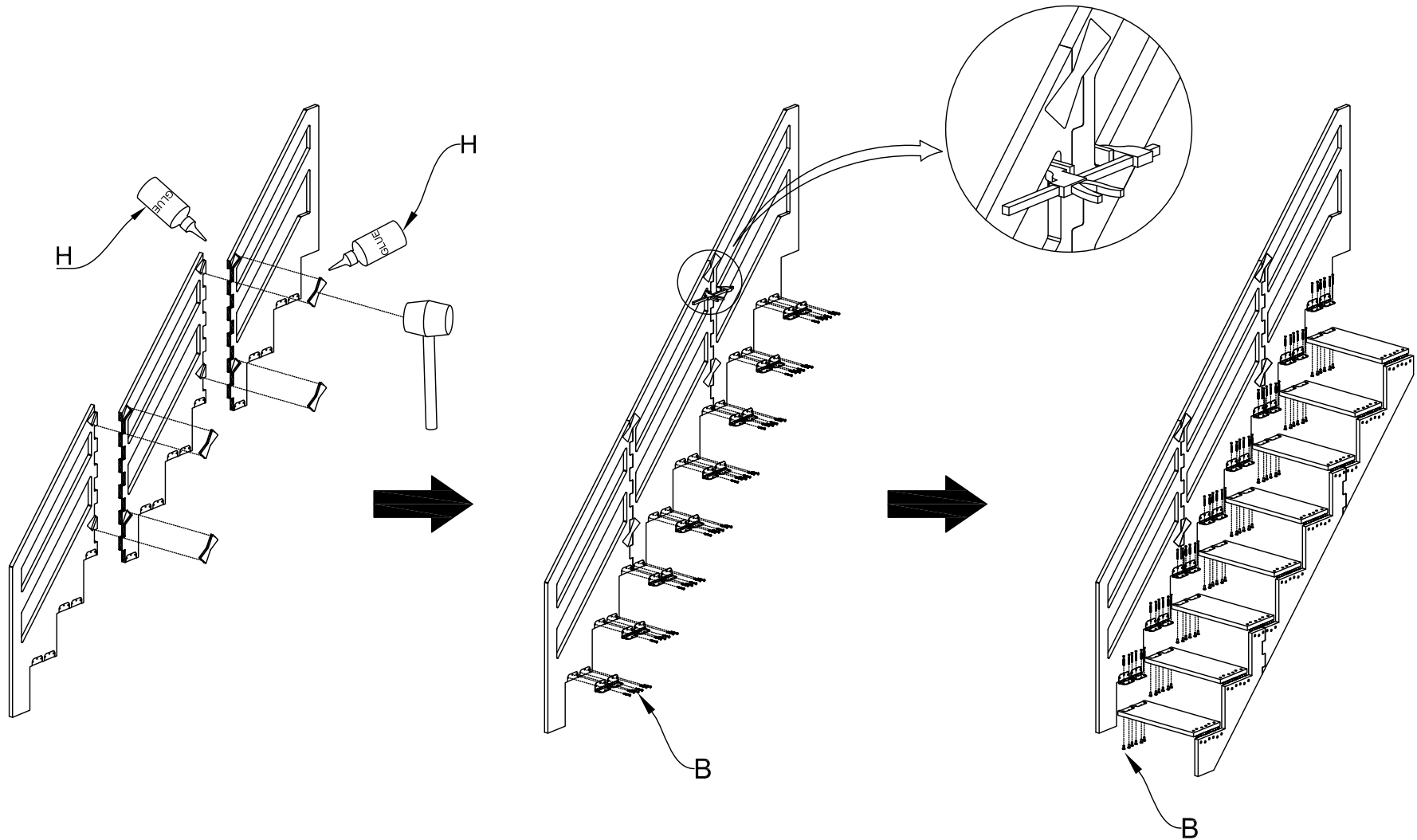
STEP 04 Attach the Remaining Treads

1. Secure the remaining treads to the stair stringer on the wall.
 - Ensure all treads are oriented correctly.



STEP 05 Assemble and Attach the Railing

1. Connect the puzzle piece joints to together, applying a little wood glue in the bow tie space and along the puzzle pieces where the railing sections connect.
2. Hammer in Bow Tie with a wood mallet.
3. For strongest fit, use wood clamps to hold the puzzle piece joints together for 15-20 minutes until dried. (You may bolt hinges to railing during the drying time).
4. Attach hinges to the railing:
 - Orient hinges with beveled holes facing out from the wood and hinge pin facing towards the top of the stairs.
5. Position the railing:
 - Rest the lip of the railing stringer on the loft edge.
 - Secure the treads to the railing.



STEP 06 Attach the Gas Struts

1. Choose the tread locations for the gas struts.

Install the two gas struts as evenly spaced as possible along the stair case. For example, on a 9-tread stair, install the struts on approximately tread 3 and tread 7.

2. Attach the brackets to the gas struts.

Secure the strut brackets onto the gas strut rods using the silver nuts.

Make sure the left and right brackets are on the same side of the rod and mirrored from each other.

3. Fold the stairs closed before mounting.

Fold the stairs up against the wall into the closed position. With the stairs closed, the gas strut should be in its fully extended position, approximately 20 inches long.

4. Attach the bottom bracket first.

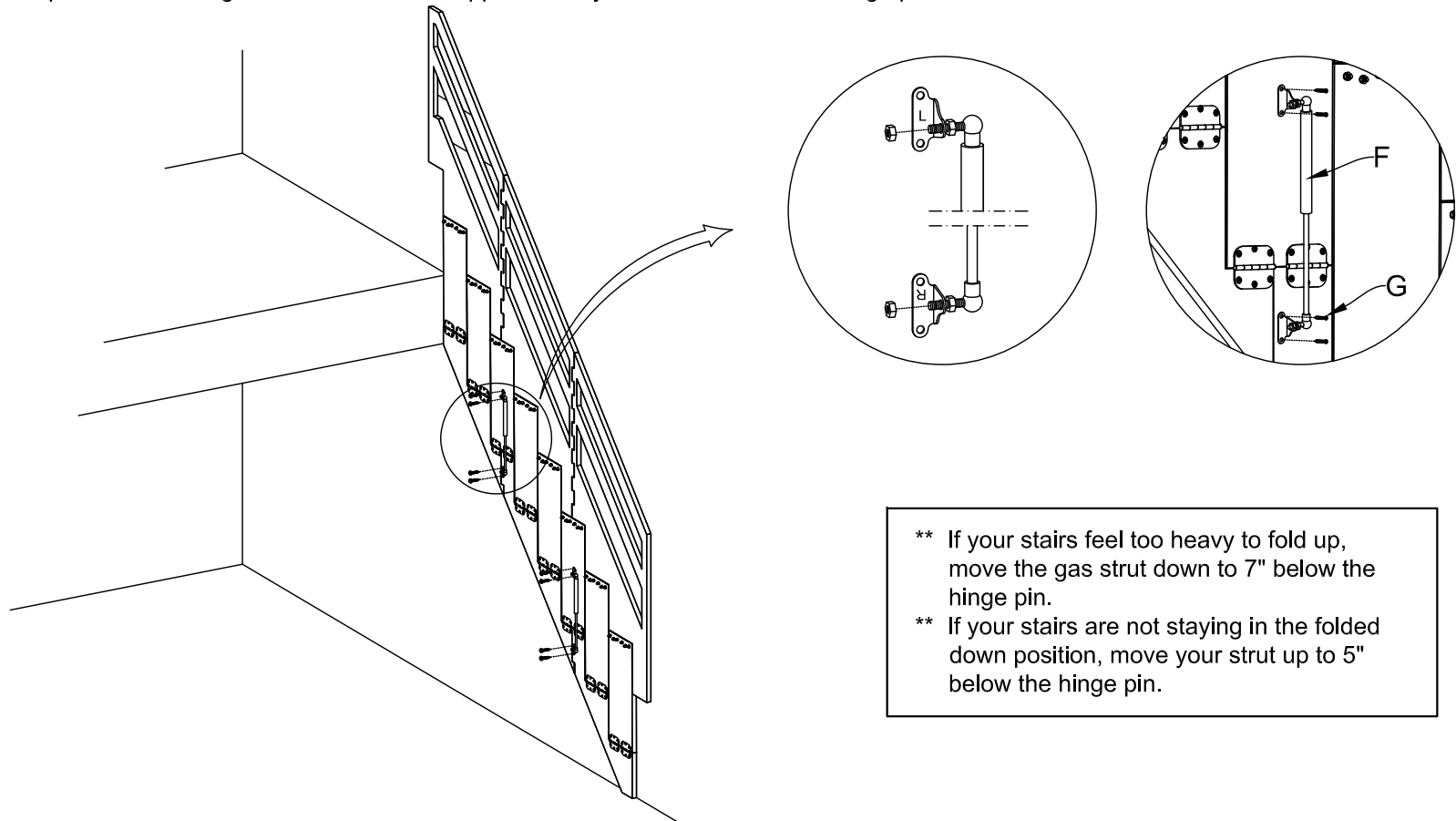
Using the silver screws, secure the bottom bracket of each gas strut to the stair stringer.

The bottom bracket should be mounted approximately 6 inches below the hinge pin.

The bottom end of the strut is the end with the thinner chrome rod.

5. Attach the top bracket.

Secure the top bracket of the gas strut to the tread, approximately 14 inches above the hinge pin



** If your stairs feel too heavy to fold up, move the gas strut down to 7" below the hinge pin.

** If your stairs are not staying in the folded down position, move your strut up to 5" below the hinge pin.

FINAL CHECKS

- Double-check all connections for tightness and alignment.
- Make sure the staircase folds and unfolds smoothly.
- Confirm all sections are level.
- It is recommended to check connections annually for safety.

